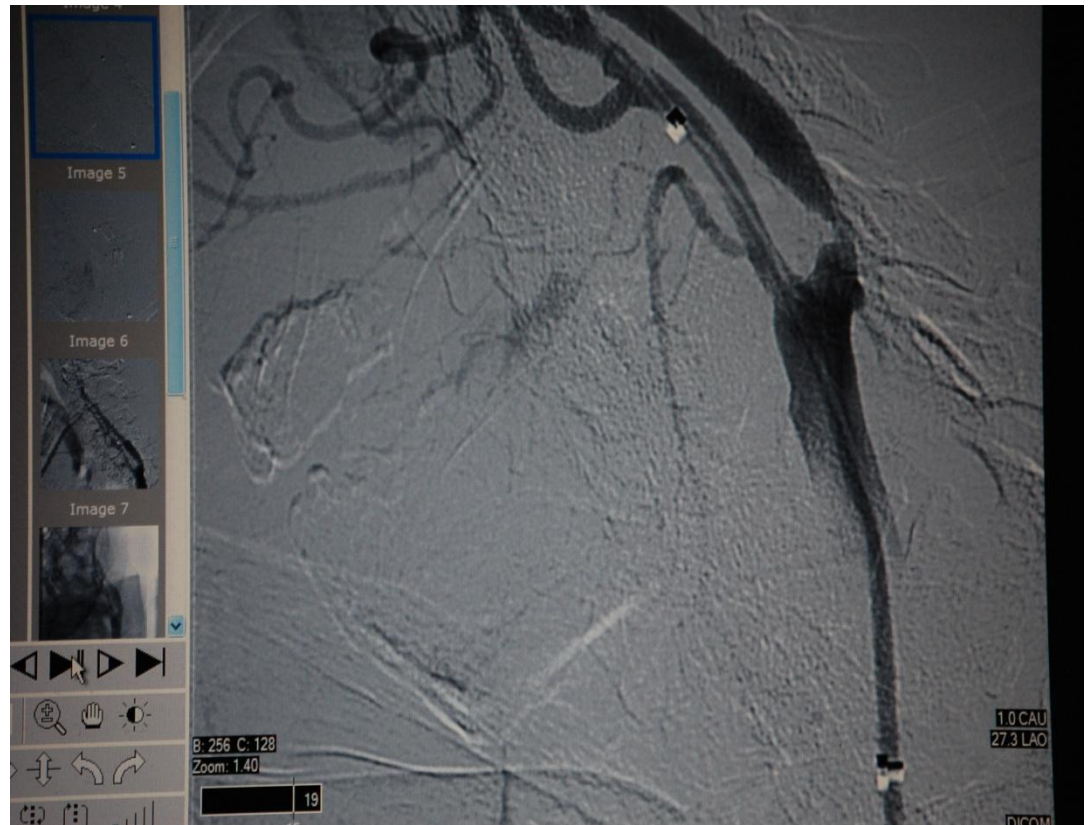


Dr. Majdi Ashchi's LICA

MoMa case

January 8, 2010

- Symptomatic patient with Bilateral disease: LICA was 95% and RICA was 85%.
- Minimal to no cross filling with circulation provided by Vertebrals.
- Treated LICA
- Use of MoMa and Angioguard for double protection in case of intolerance of patient due to limited cross filling and CCA balloon.



Dr. Majdi Ashchi's LICA MoMa case

January 8, 2010

- Placed MoMa over Super Stiff Amplatz
- Inflated both ECA and CCA balloons with no intolerance issues
- Pre-dilated, stented and Post-Dilated with no issues
- After three aspirations no debris was observed and ECA and CCA balloons were deflated.
- No debris in Angioguard
- Case was completed with no issues and a great result!

